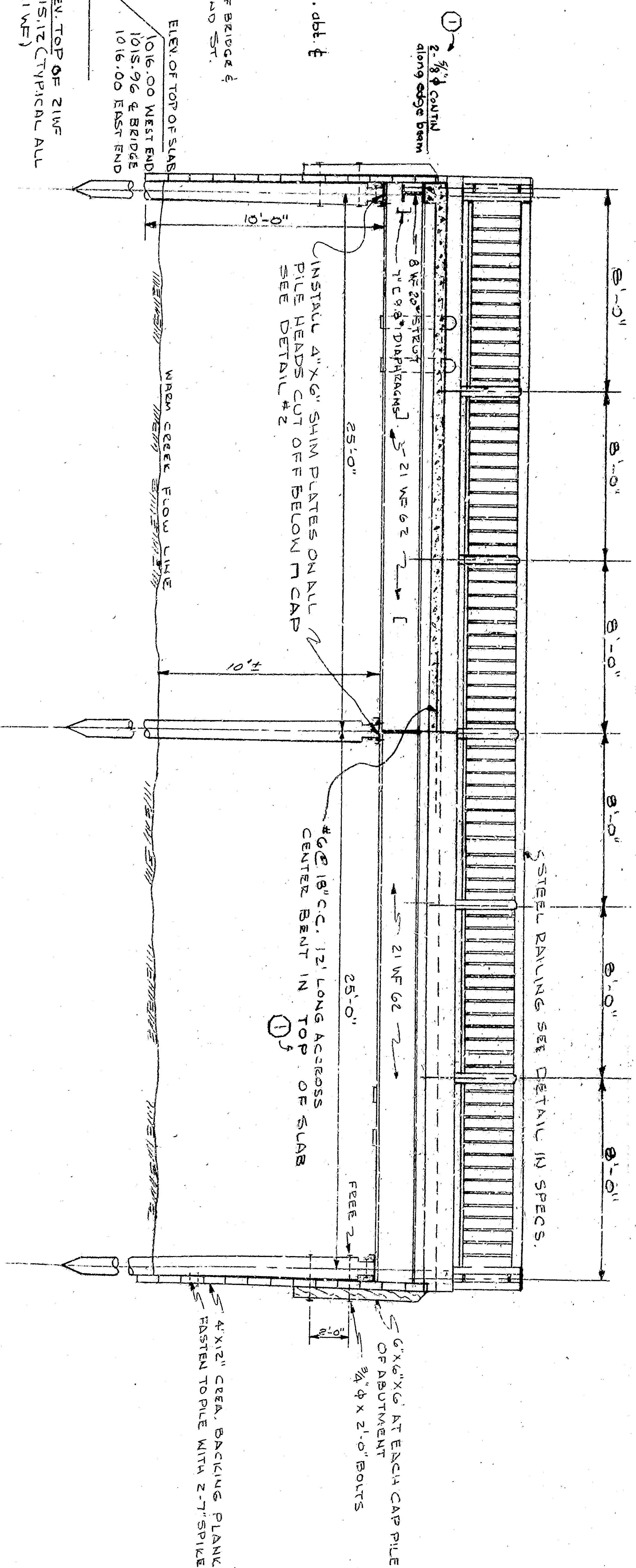
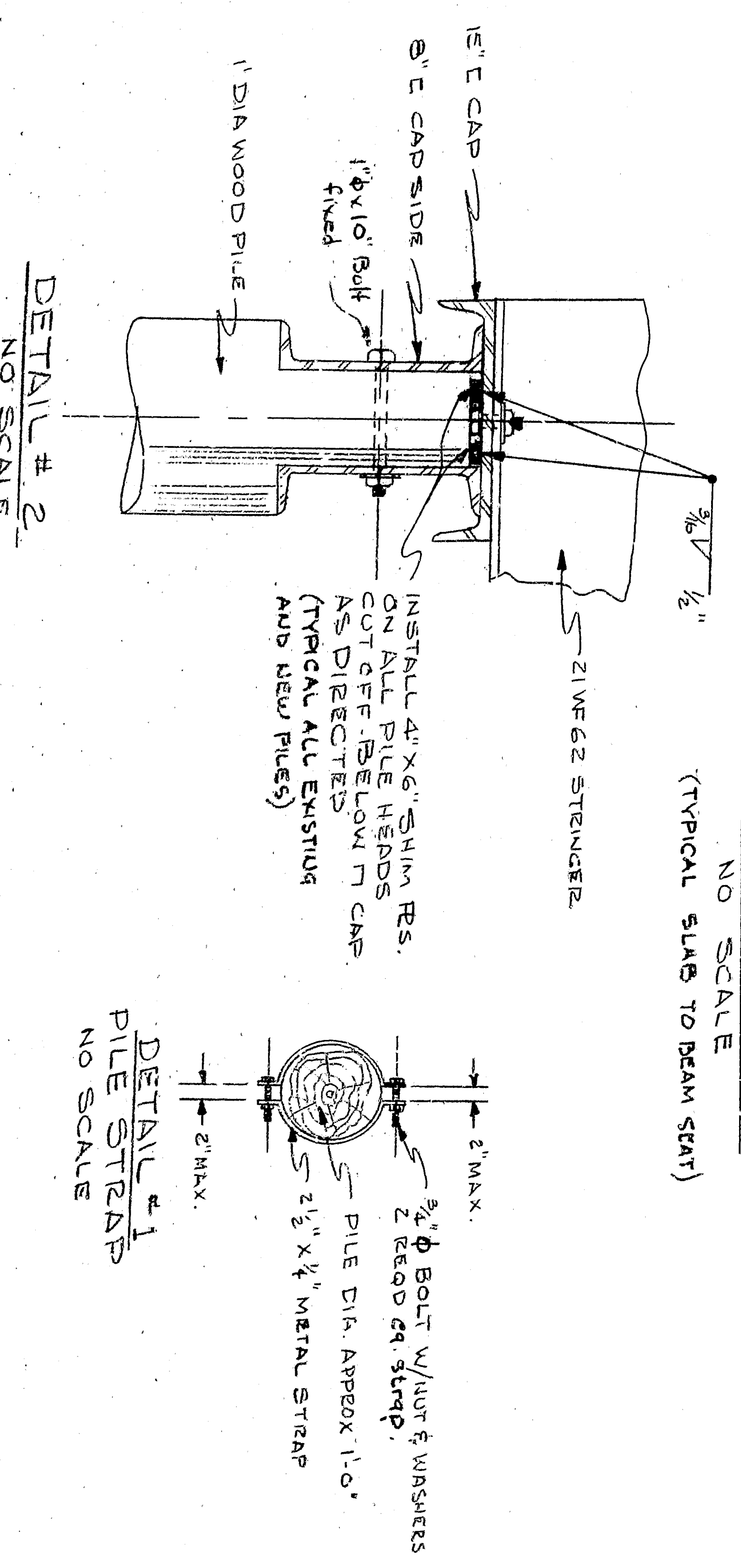


NOTE: ALL BARE SPICERS SHALL BE 40 DIA. AT LEAST

TYPICAL SECTION
SCALE: 3/8\"/>

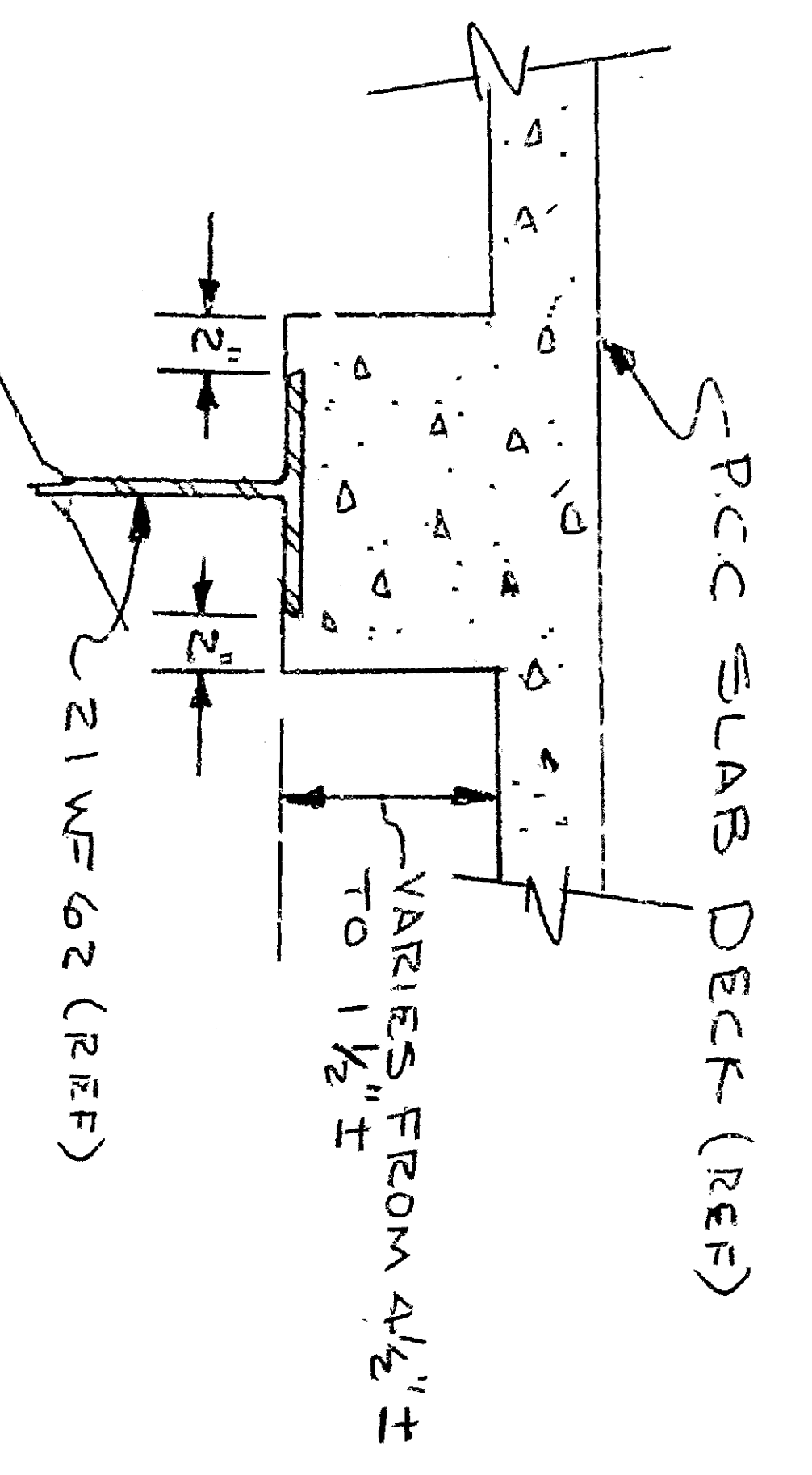


LONGITUDINAL ELEVATION AND SECTION ON CENTER LINE
SCALE: 1/4\"/>

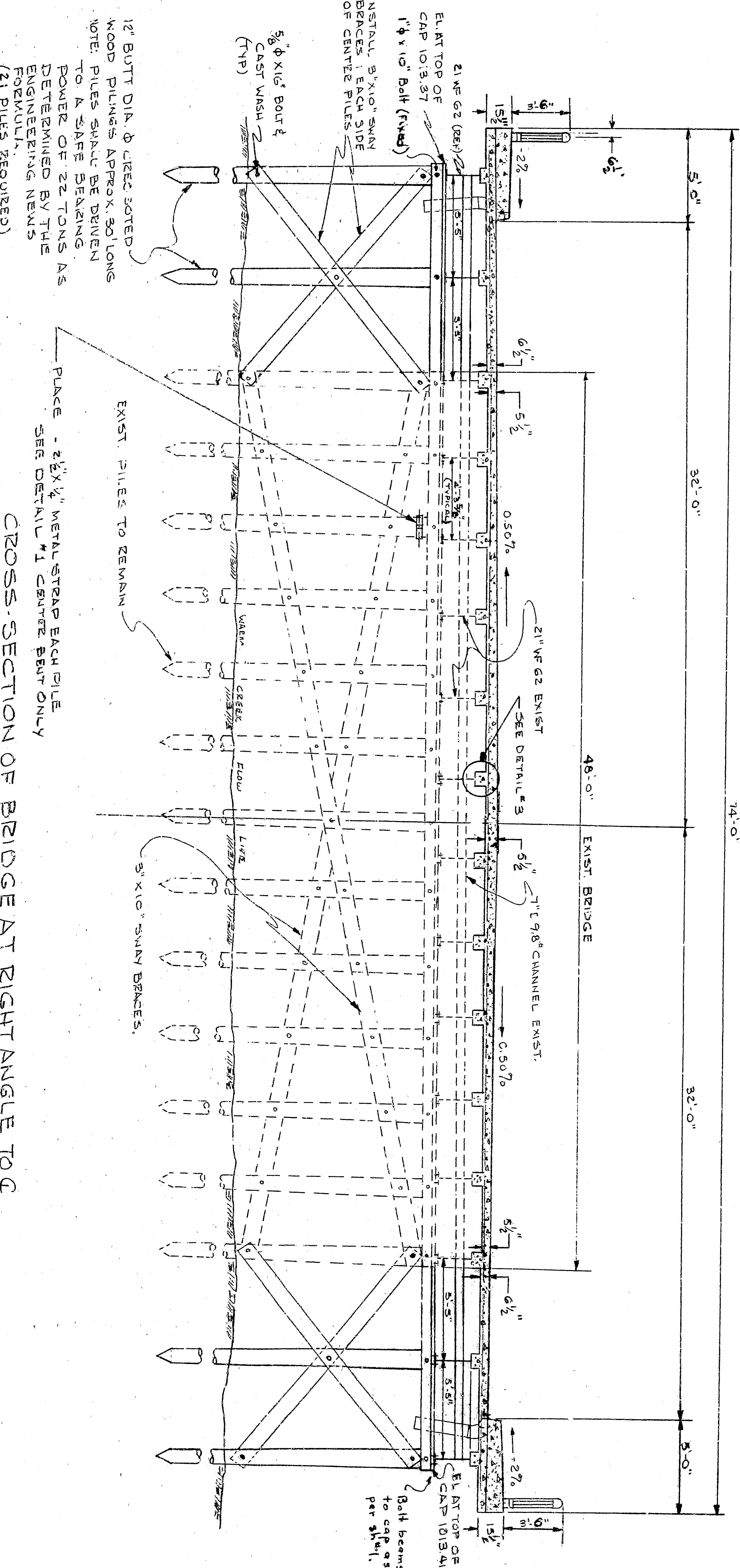


DETAIL # 1
NO SCALE

DETAIL # 2
NO SCALE

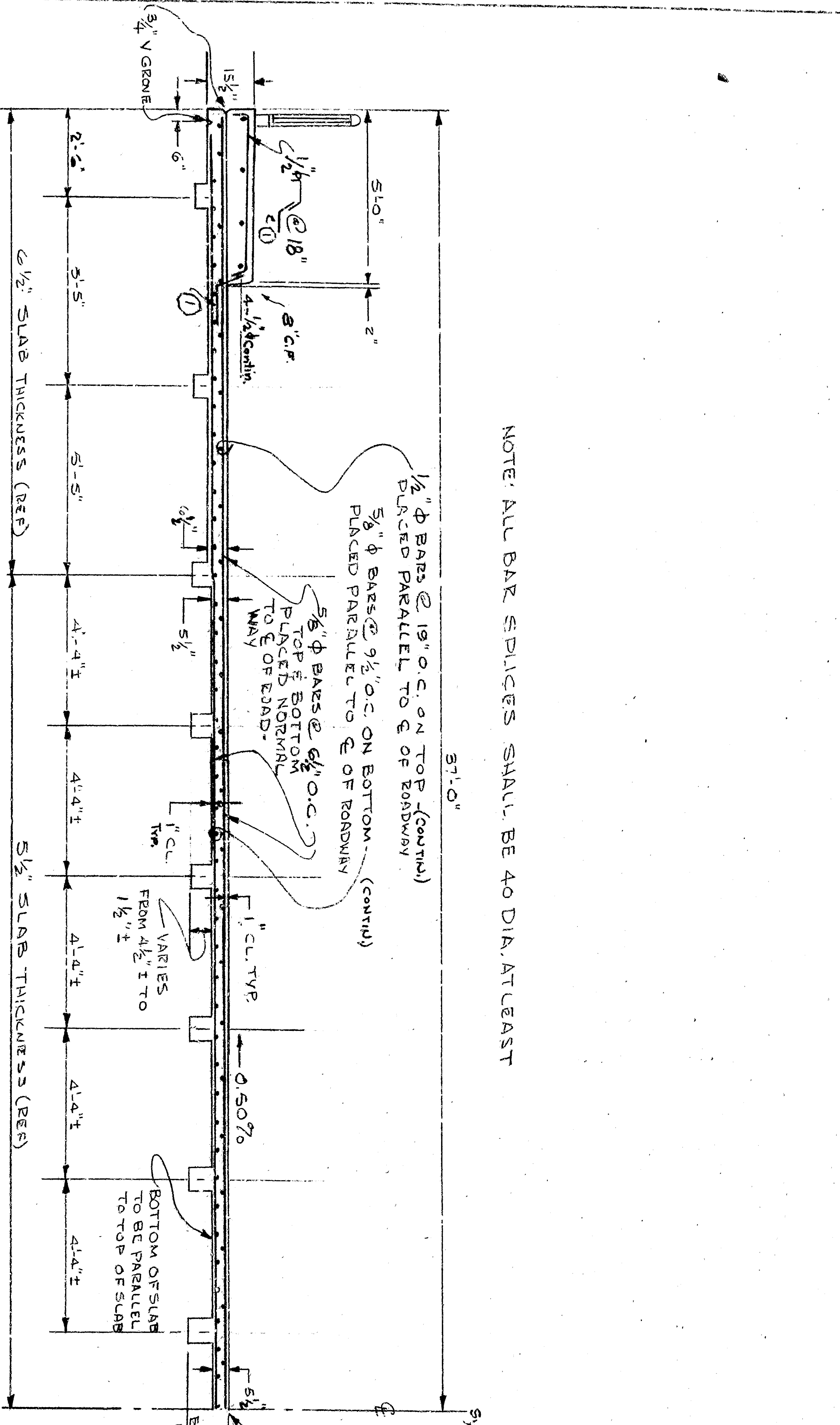


DETAIL # 3
NO SCALE
(TYPICAL SLAB TO DECK SEAT)



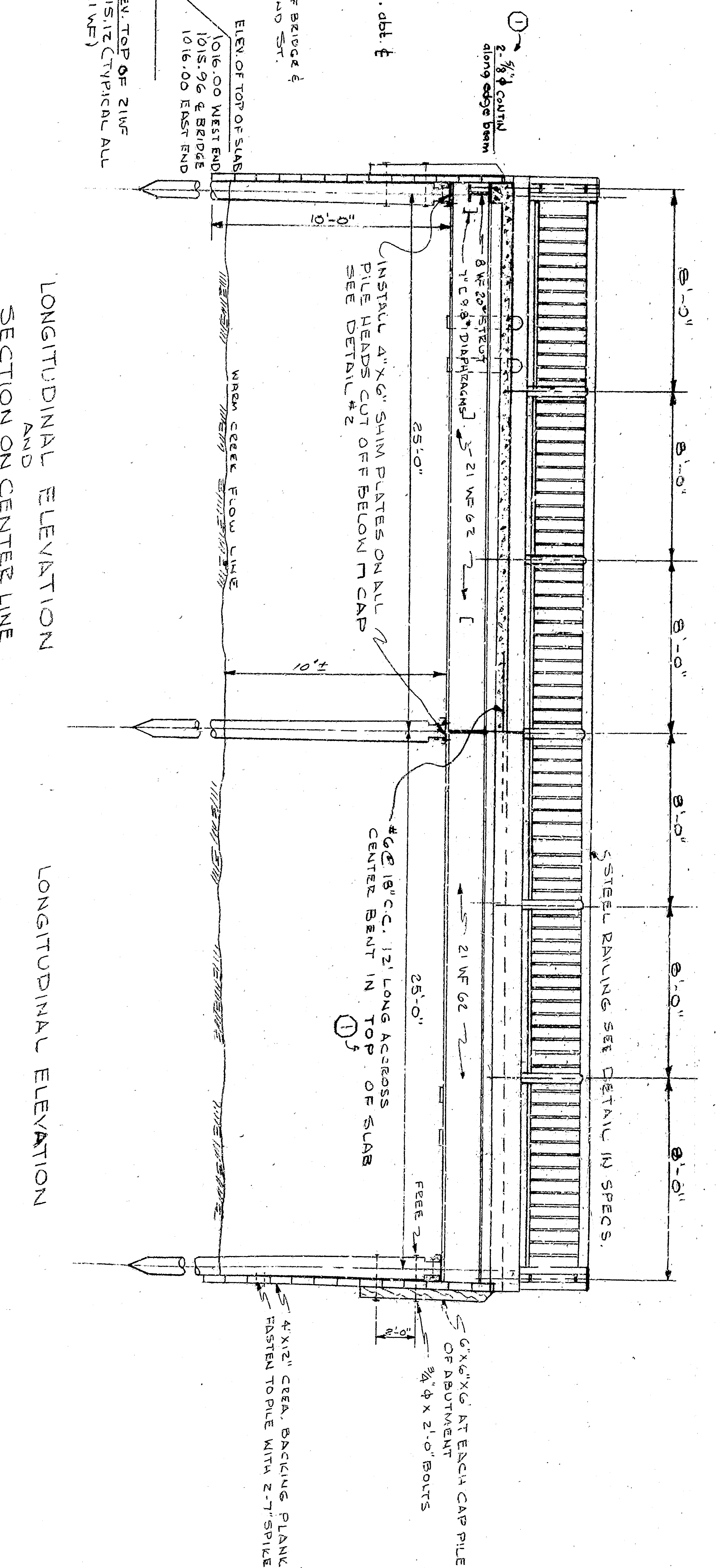
CROSS SECTION OF BRIDGE AT RIGHT ANGLE TO Q
SCALE: 1/4\"/>

APPROVED	DATE	BY	FOR
<i>[Signature]</i>	11-1-72	W. J. [Signature]	BRIDGE
CITY ENGINEER			
CITY OF SAN BERNARDINO			
BRIDGE			
SECOND ST. OVER WARM CREEK			
REPAIR AND WIDENING			
DESIGNED BY	DATE	BY	FOR
<i>[Signature]</i>	11-1-72	W. J. [Signature]	BRIDGE
CITY ENGINEER			
CITY OF SAN BERNARDINO			
BRIDGE			
SECOND ST. OVER WARM CREEK			
REPAIR AND WIDENING			
CHECKED BY	DATE	BY	FOR
<i>[Signature]</i>	11-1-72	W. J. [Signature]	BRIDGE
CITY ENGINEER			
CITY OF SAN BERNARDINO			
BRIDGE			
SECOND ST. OVER WARM CREEK			
REPAIR AND WIDENING			
RECOMMENDED BY	DATE	BY	FOR
<i>[Signature]</i>	11-1-72	W. J. [Signature]	BRIDGE
CITY ENGINEER			
CITY OF SAN BERNARDINO			
BRIDGE			
SECOND ST. OVER WARM CREEK			
REPAIR AND WIDENING			

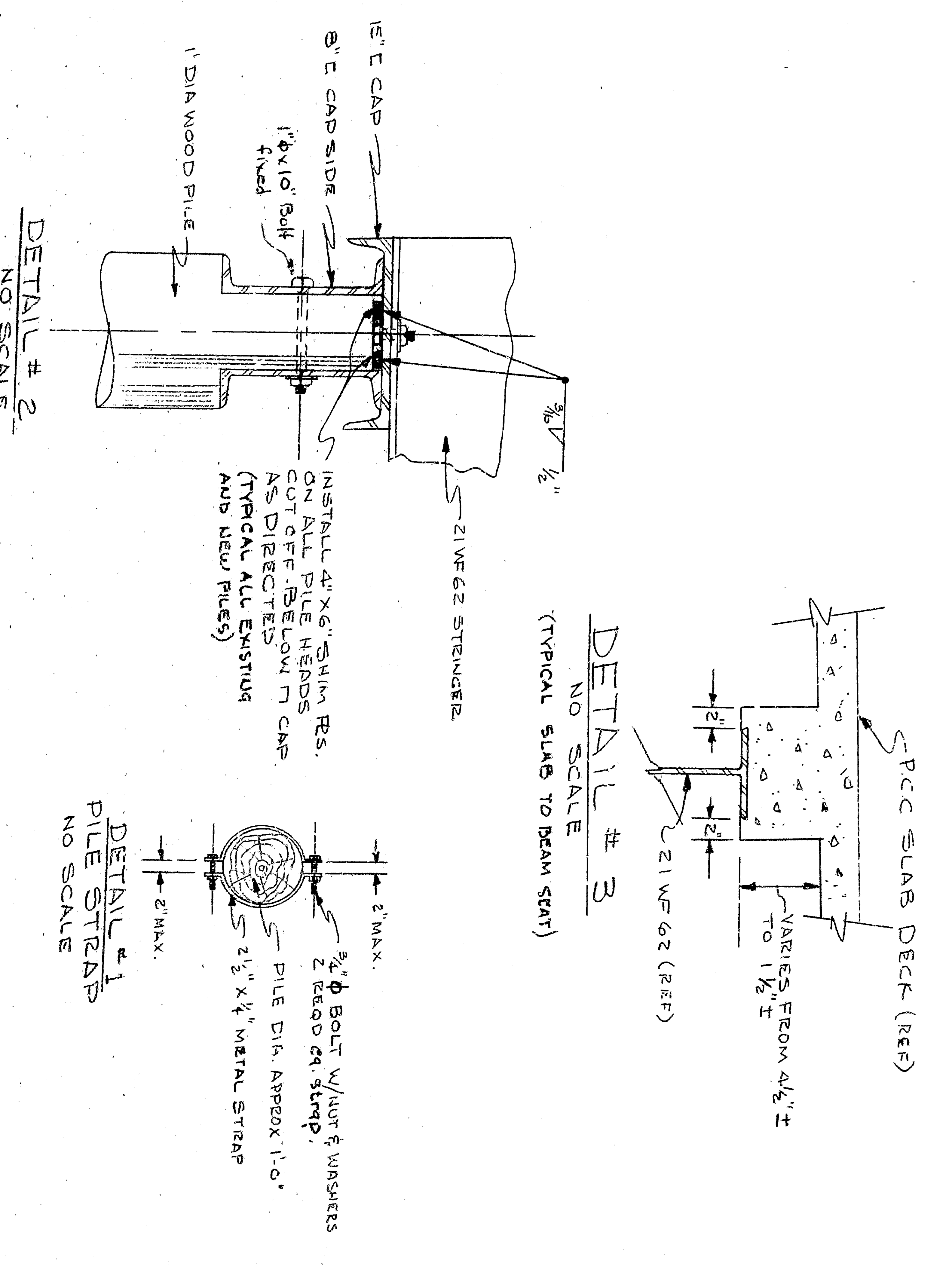


NOTE: ALL BAR SPACINGS SHALL BE 40 DIA. AT LEAST

TYPICAL SECTION
SCALE: 3/8\"/>



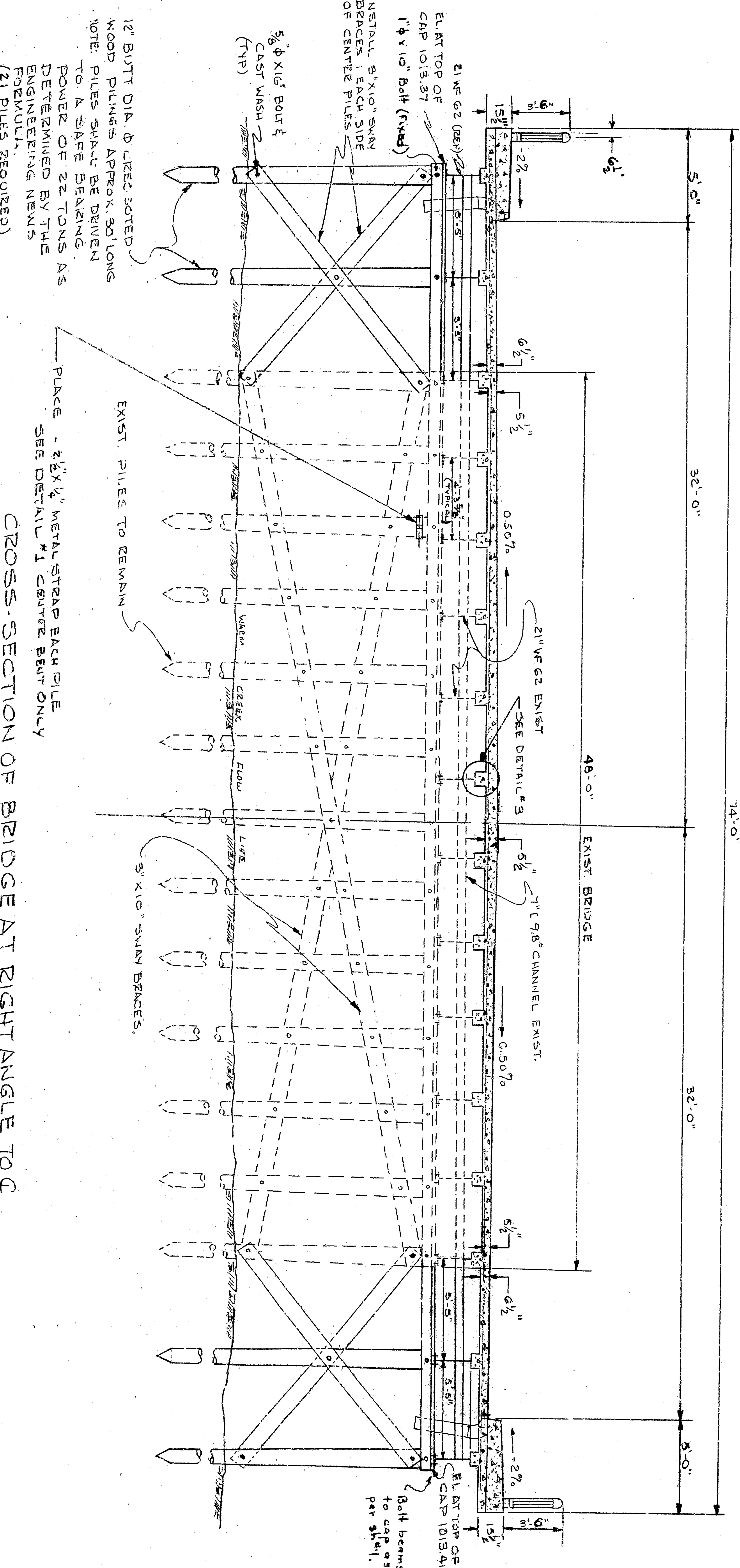
LONGITUDINAL ELEVATION AND SECTION ON CENTER LINE
SCALE: 1/4\"/>



DETAIL # 2
NO SCALE

DETAIL # 3
NO SCALE
(TYPICAL SLAB TO DECK SEAT)

DETAIL # 1
PILE STRAP
NO SCALE



CROSS SECTION OF BRIDGE AT RIGHT ANGLE TO Q
SCALE: 1/4\"/>

APPROVED	DATE	BY	FOR
<i>[Signature]</i>	11-2-72	W. J. [Signature]	BRIDGE
CITY ENGINEER			
CITY OF SAN BERNARDINO			
REGISTERED CIVIL ENGINEER NO. 12,453			
DESIGNED BY	DATE	BY	FOR
<i>[Signature]</i>	11-2-72	W. J. [Signature]	BRIDGE
CHECKED BY	DATE	BY	FOR
<i>[Signature]</i>	11-2-72	W. J. [Signature]	BRIDGE
SHEET 3 OF 4			
RECOMMENDED BY			
4 SHEETS			
SECOND ST. OVER WARM CREEK REPAIR AND WIDENING			